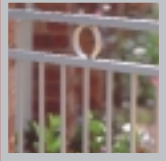
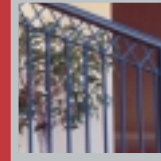


CIVICO

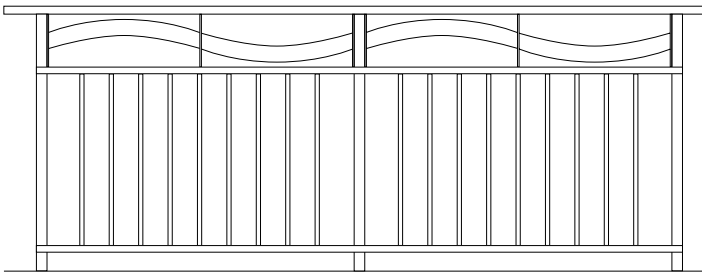
Aluminium Gates Fences Balustrades Light Steel Fabrication



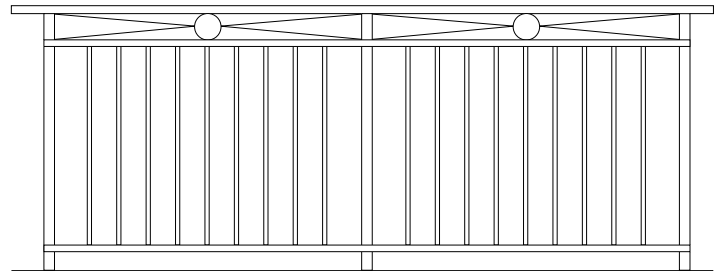
BALUSTRADES



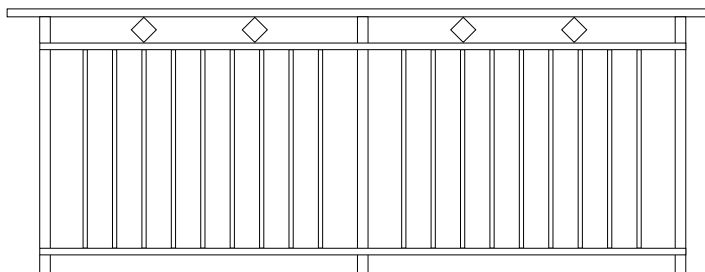
Double Wave Design



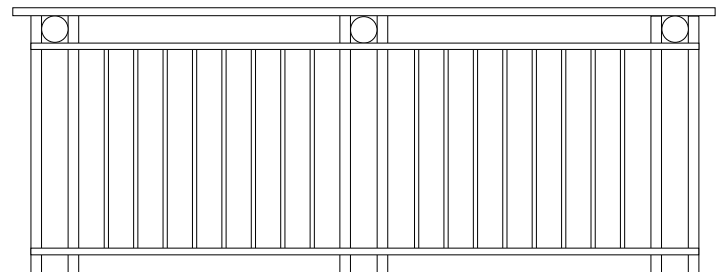
A28 Design



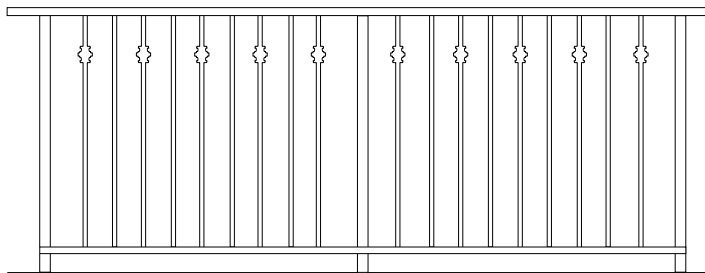
Diamond Top Design



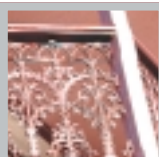
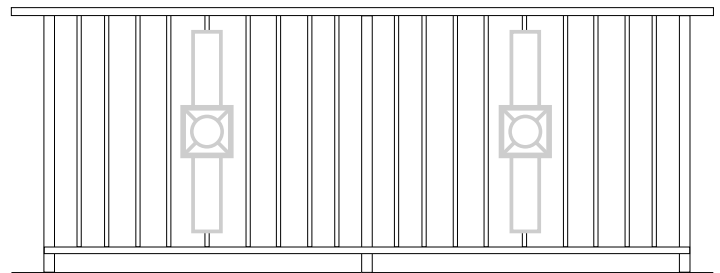
Double Post and Ring Design



Fence Decorator Design



No.43 Newel Design



Address 18 Callistemon Close, Warabrook NSW, 2304

Telephone 02 4967 2044 Facsimile 02 4960 1171

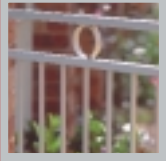
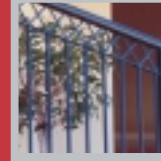
Email enquiries@civico.com.au Web www.civico.com.au

CIVICO

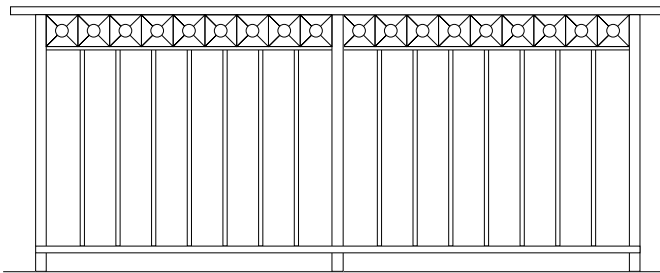
Aluminium Gates Fences Balustrades Light Steel Fabrication



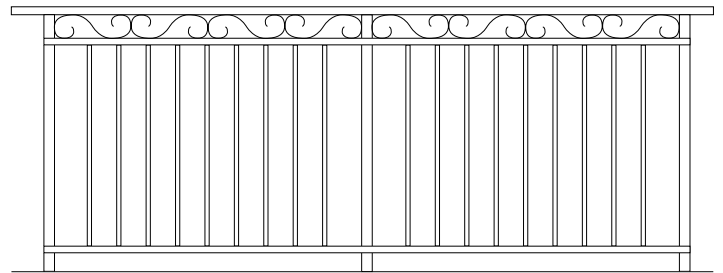
BALUSTRADES



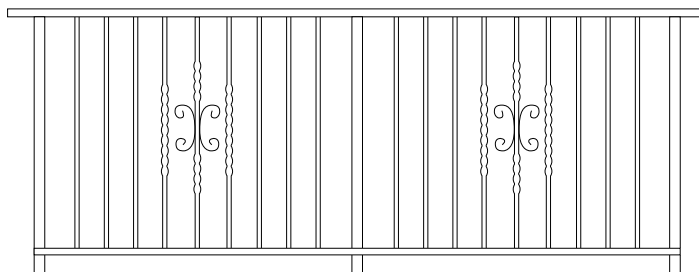
Keswick Design



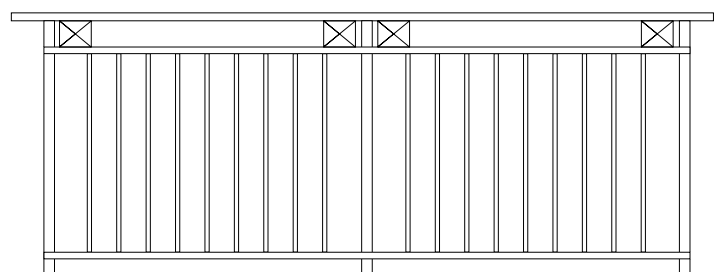
A50 Design



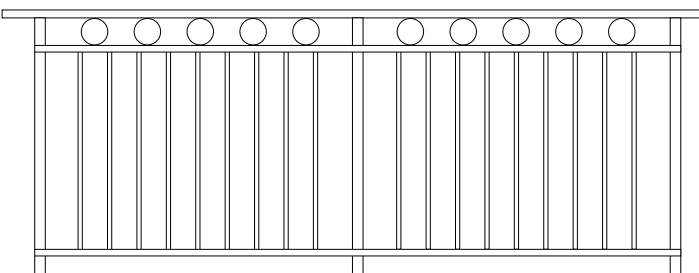
Back to Back C Scroll Design



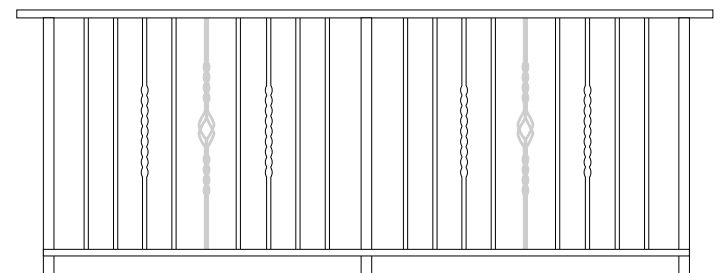
Cross Design



Ring Top Design



Twisted Bar & Basket Design



CIVICO

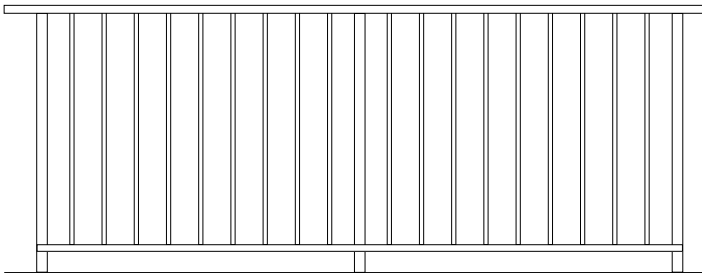
Aluminium Gates Fences Balustrades Light Steel Fabrication



PICKETS

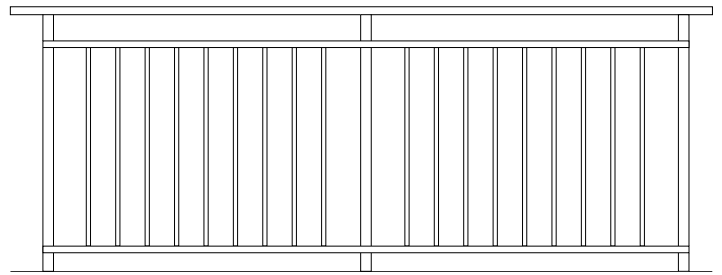
40 System Picket Design

Vertical bars are available in 16mm round or square.



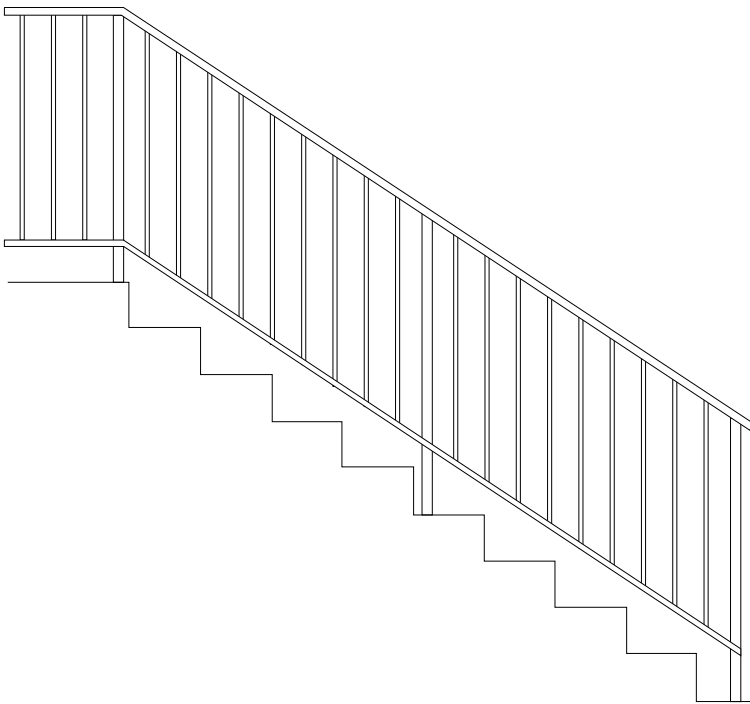
40 System Ship-style Picket Design

Vertical bars are available in 16mm round or square.

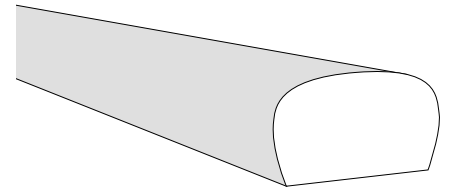


Stair Rake

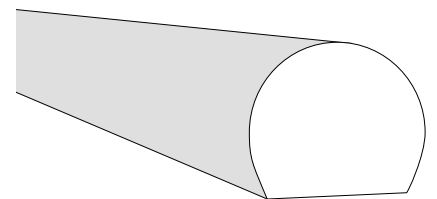
Vertical bars are available in 16mm round or square.



Oval Top Rail

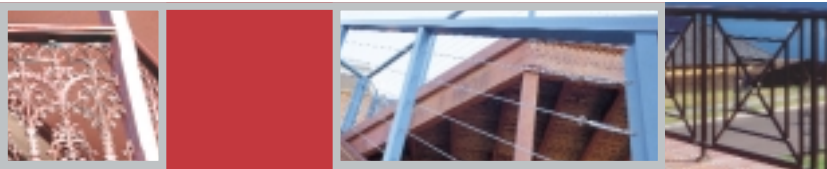
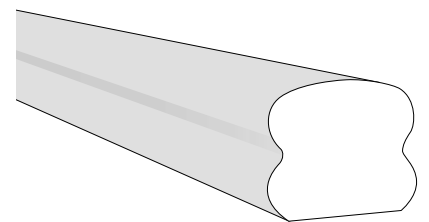


Round Top Rail



Colonial Top Rail

(additional charge)



Address 18 Callistemon Close, Warabrook NSW, 2304

Telephone 02 4967 2044 Facsimile 02 4960 1171

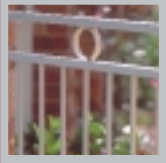
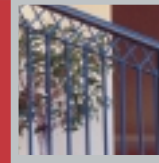
Email enquiries@civico.com.au Web www.civico.com.au

CIVICO

Aluminium Gates Fences Balustrades Light Steel Fabrication

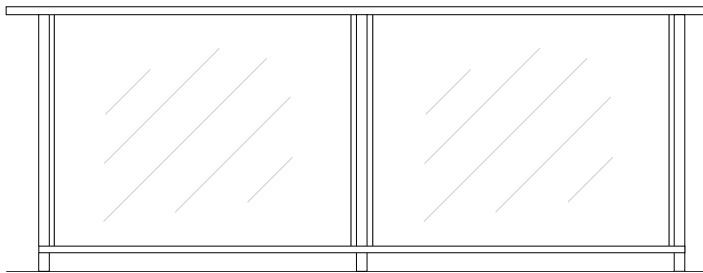


GLASS



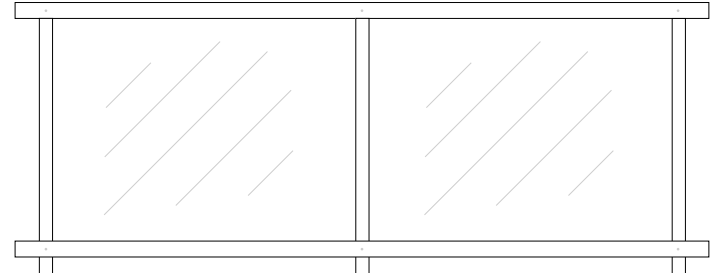
40 System Design

We recommend 6.38mm laminated safety glass or 6mm toughened glass



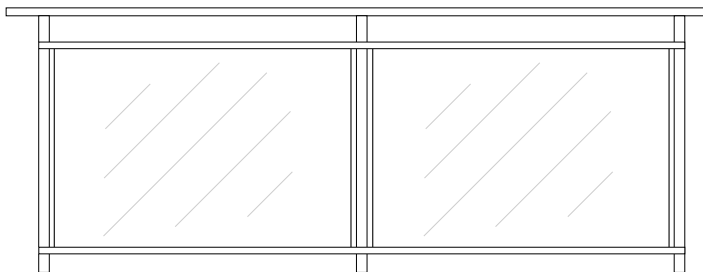
Deluxe System Design

We recommend 6.38mm laminated safety glass or 6mm toughened glass



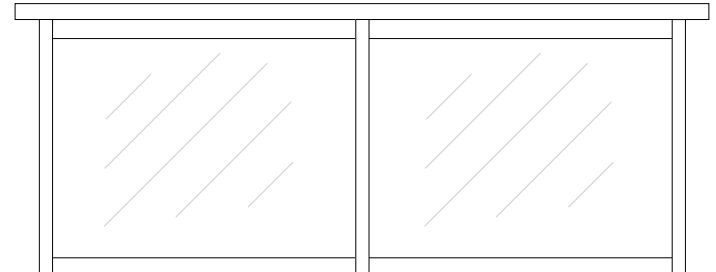
Ship-style Glass Design

We recommend 6.38mm laminated safety glass or 6mm toughened glass



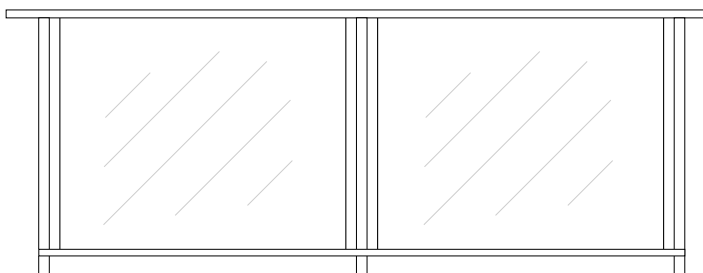
The Regatta Design

We recommend 6mm toughened glass with polished edges top and bottom



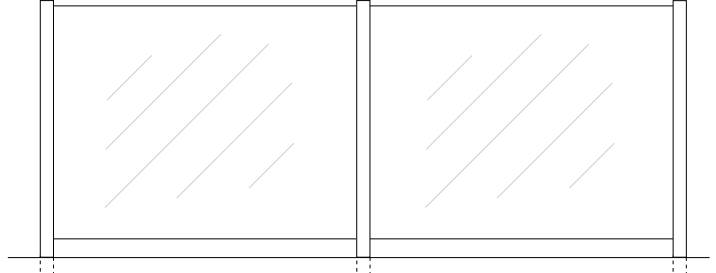
Vertical Air Gap Design

We recommend 6mm toughened glass with polished edges at side



Semi-frameless Design

We recommend 10mm toughened glass with polished edges top and bottom



Glass is available in clear, grey tint, bronze tint and obscured.

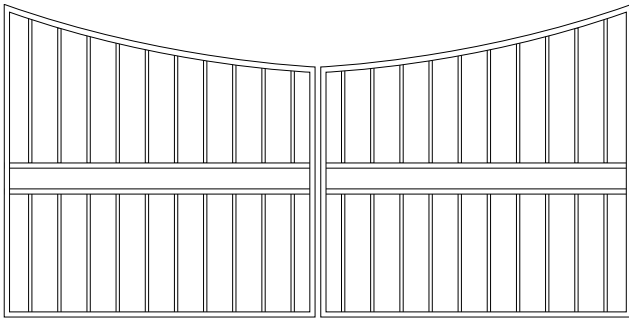
CIVICO

Aluminium Gates Fences Balustrades Light Steel Fabrication

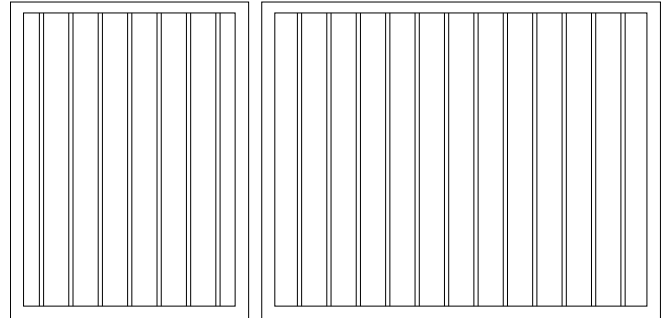


GATES

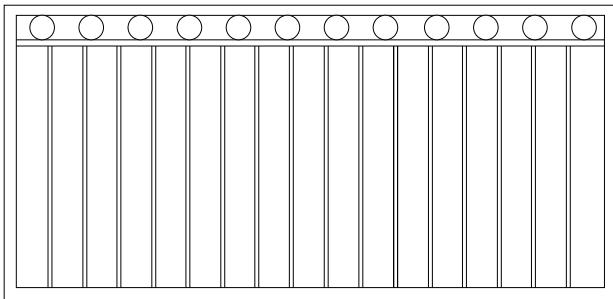
Azalea Design



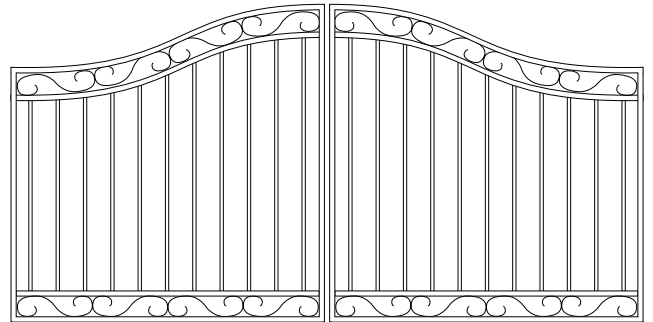
Daisy Design



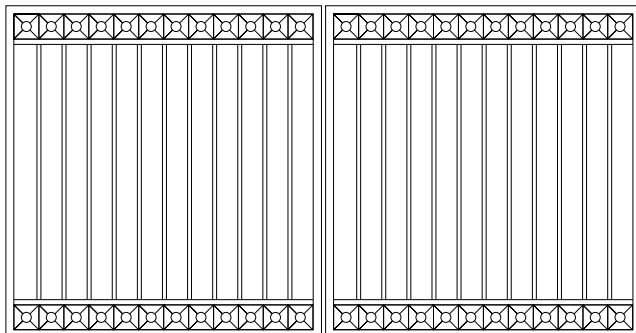
Buttercup Design



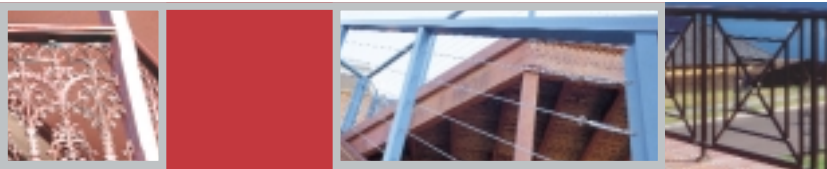
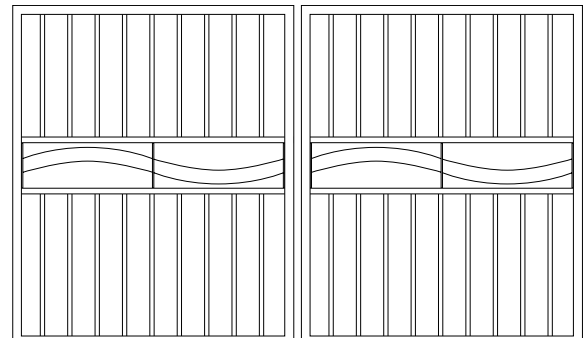
Sunflower Design



Cassia Design



Iris Design



Address 18 Callistemon Close, Warabrook NSW, 2304

Telephone 02 4967 2044 Facsimile 02 4960 1171

Email enquiries@civico.com.au Web www.civico.com.au

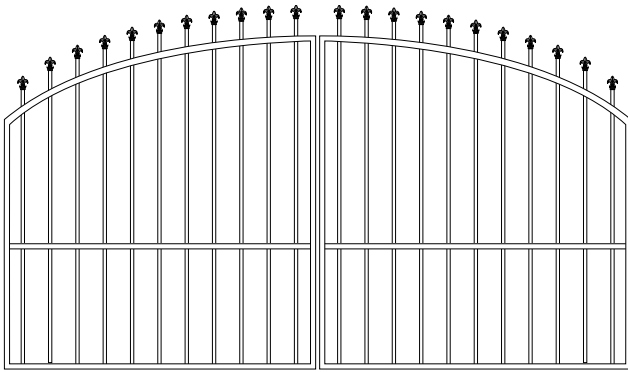
CIVICO

Aluminium Gates Fences Balustrades Light Steel Fabrication

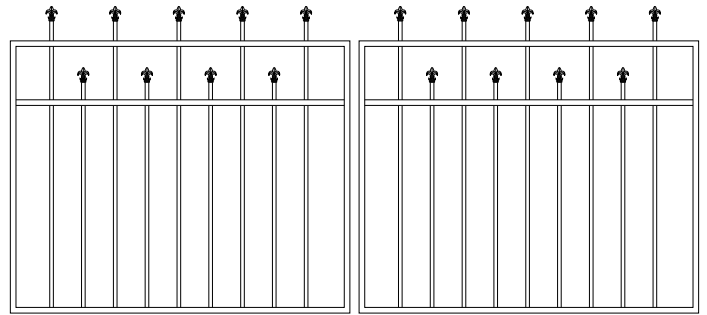


GATES

Magnolia Design



Gardenia Design



Camelia Design with Lace Insert

